



- Suitable for balls, caps, logos and shoes
- Quick and tool-free change of elements

**User friendly :**

- \* Easy replacement of the plate
- \* Automatic opening by electromagnet

- Optimal heat & pressure distribution
- Robust frame
- Suitable for laser transfer applications, screen printing, sublimation on textile and textile transfer
- Ideal for small productions
- Manufactured in France
- 2-year guarantee on the machine
- 10-year guarantee on heating element



Set programs



QuickRelease® system



Fast heat up



Pre-heat time

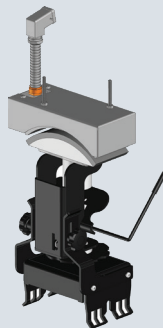


Electromagnetic

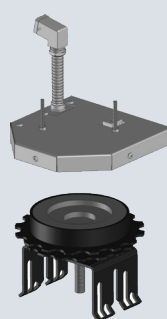
## OPTIONAL ACCESSORIES



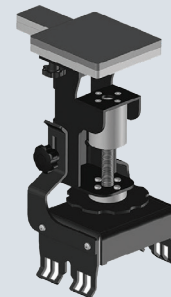
Support table



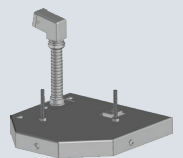
CAP Accessory



BALL Accessory



SHOE Accessory



FLAT Plate

Email

sales@sefa.fr  
support@sefa.fr  
www.sefa.fr

Phone

Office : + 33 4 68 74 05 89  
Fax : + 33 4 68 74 24 08

Address

SEFA SAS  
Z.I. PASTABRAC  
11 260 ESPERAZA (FR)

## TECHNICAL CHARACTERISTICS

Type Operation	Electromagnetic Clam
Platen size	Ball : Size 0 to 7 + Rugby Cap : 17 x 8 cm (EU & US version) Logo : 13 x 13 cm
Weight	24 Kg
°C / °F Max	220 °C / 429 °F
Power	600 W
Power supply	240 V Single-phase
Amperage	3 A
Applications	Direct to Garment, Flex, Textile Sublimation, Laser Transfer, Screen Printing
Dimensions	899x503x231 mm 35x20x9 "

## SETTINGS



Electronics developed by Sefa  
Accurate and fast regulation (PID control) for a wide range of heat transfer products : Flex, flock, sublimation, screen printing transfer.  
Double timer (main + pre-heat)  
2 cycle counters  
3 settable programs  
Stop cycle function

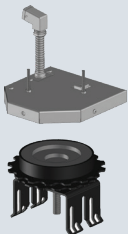
From 0 to 570 sec (precision +/- 1%).  
From 0 to 220°C (precision +/- 1%).

Heating time to reach 180°C : 5 min.

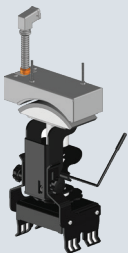
## OPTIONAL ACCESSORIES



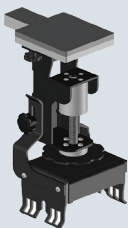
**TAB-98 LITE**  
Support table.



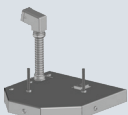
**ACC-BALL**  
Upper & lower ball accessory for Clam Sport.



**ACC-CAP CB / US**  
Upper & lower cap accessory for Clam Ball (European and US version available).



**ACC-SHL-CB**  
Lower logos & shoes accessory for Clam Sport.



**PLA-6CB**  
Flat heating plate for Clam Sport.

## QUICK SIZE CHANGE



1. PULL THE PLATE UP

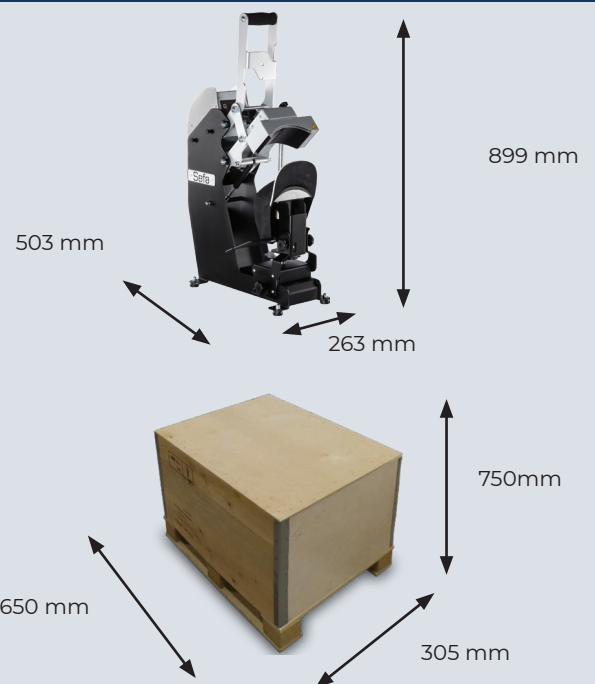


2. RETURN IT AT 180°



3. PUT IT BACK IN PLACE

## DIMENSIONS



Box weight CAI-CLAMBALL : 15 kg